

Volume 25, Number 10

October, 2009

## OCTOBER, 2009

- 10/3 Seminar. **Patricia McConnell**, Ph.D., CAAB, "For the Love of a Dog. Understanding emotions in people and dogs: Implications for training and relationships." LaSells Stewart Center, 9 a.m. - 4:30 p.m. Co-sponsored by OSU Animal Sciences and Wonder Dogs (registration details, p. 2).
- 10/6-8 **Pacific NW Animal Nutrition Conference.** Boise, ID.
- 10/12 **ANS Hamburger Barbecue Lunch**, 12:00-1:00, back of Withycombe (sign-up details coming!)
- 10/22 **CAS Faculty and Staff Awards Luncheon**, CH2M Hill Alumni Center, 12:00-1:30 p.m.
- 10/28 **Diamond Pioneer Lunch.** CH2M Hill Alumni Center, 11:45.

## Welcome New Faculty



Dr. Gerd Bobe

We welcome two new faculty to Animal Sciences this fall. **Dr. Gerd Bobe** is a ruminant nutritionist with an interest in

Dairy nutrition. Gerd earned his Ph.D. at Iowa State working on prevention/treatment of fatty liver/ketosis in transition dairy cows. He has just completed a post doctoral fellowship at the NIH-National Cancer Institute on dietary cancer prevention. In addition to teaching ruminant nutrition, Gerd will have an active dairy cattle nutrition program and continue his interest in nutrition and cancer prevention with an appointment as a principal investigator in the Linus Pauling Institute.

**Dr. Claudia Ingham** joins us as instructor for ANS 420, Ethical Issues in Animal Agriculture. Claudia completed her Ph.D. in OSU's Department of Rangeland Ecology and Management this past January; her thesis was titled



Dr. Claudia Ingham

"Himalayan blackberry and English ivy response to high-intensity, short duration goat browsing." Claudia earned her B.S. degree at the University of California, Davis, in International

Ag Development, and subsequently her MSc degree at the University of Edinburgh, where she studied growth and feed intake in Suffolk sheep. Formerly a 4-H program assistant in Washington County and then a high school science teacher, she currently is a private consultant for pasture improvement and sustainable agriculture.

## Travel/Presentations

**Giovanna Rosenlicht** will attend the national conference of the Association of Pet Dog Trainers October 21-25 in Oakland, CA. Speakers will include animal behaviorists and veterinarians from across the country.

## Publications

**Hayat, Z., G. Cherian, T.N. Pasha, F.M. Khattak, M.A. Jabbar.** 2009. Effect of feeding flax and two types of antioxidants on egg production, egg quality and lipid composition of eggs. *J Appl. Poult. Res.*18: 541-551.

## Popular Press

**G. Pirelli, J. Hart, S. Filley, A. Peters, M. Porath, T. Downing, M. Bohle, and J. Carr** of Oregon State Extension have published a bulletin titled "Early spring forage production for Western Oregon pastures" (EM 8852-E), providing management concepts and directions for extending the grazing season with production of late-winter or early-spring forage. Quoting **Shelby Filley, Gene Pirelli** and **Mylen Bohle**, Lee Farren sums up the application and benefits of "T-sum 200 timing" to shift grass production forward in the September issue of *Western Farmer Stockman* (p. 16). Copies of both Lee Farren's article and the bulletin by OSU researchers are available in the Main Office.

## Animal Behaviorist to Give Seminar

...Giovanna Rosenlicht

Dr. Patricia McConnell, Ph.D, Certified Applied Animal Behaviorist (CAAB), internationally known speaker and author of "The Other End of the Leash" and "Leader of the Pack," will be presenting a one day seminar on October 3rd at The LaSells Stewart Conference Center. The seminar, based on her most recent book titled "For the Love of a Dog" will be discussing the emotions of humans and dogs and how interactions affect training and relationships. Pre-registration is required. For more information, contact [julie@wonderdogs.com](mailto:julie@wonderdogs.com), 541-929-3915, or [giovanna.rosenlicht@oregonstate.edu](mailto:giovanna.rosenlicht@oregonstate.edu), 541-737-1918.

## Welcome New Grads



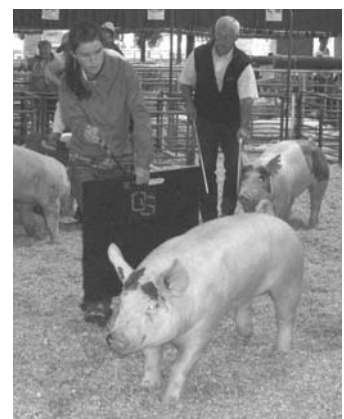
**Jenny Bartell** is beginning an M.S. program with **Fred Menino** this fall. Jenny grew up in LaGrande on her family's horse and cattle ranch. She completed her B.S. degree in Biology this year at Eastern Oregon University, La Grande. She will be doing research in reproductive physiology.



**Cheri Bullock** completed her B.S. degree in Zoology at OSU last spring. Cheri grew up on her family's 60 acres in Washington state, where she raised German Shepherds and Andalusian horses. Her family fairly recently moved to a smaller acreage in Lebanon, OR, where she has 24 laying hens. Cheri will be working with **Gita Cherian** on research focusing on the effects of lipids in hen's diets on developing chicks.

## OSU Swine Unit Successful at Oregon State Fair

...Keely Oswald



Keely Oswald showing "Todd" at the Oregon State Fair.

The Oregon State University Swine Unit had a very successful year at the Oregon State Fair. The Swine Unit exhibited a Duroc

boar, a crossbred boar, and two crossbred barrows. All of the pigs exhibited were born and raised at the Swine Unit on campus.

The Duroc boar, "Rusty," won his class and continued on to win Champion Duroc Boar. He was sold later in the fair to Cory Blake of Newburg. We are excited to see him go to a great home. "Todd," the crossbred boar, won his class of twelve boars. He was sold to Adams Family Showpigs of Idaho. They will be collecting him as a boar stud and advertising him on their website. "Midnight" and "Fred," the crossbred barrows, received first and second in their class, respectively. Midnight then competed in the crossbred barrow drive and won Champion Crossbred Barrow. He then competed against the champion purebred barrows and won Supreme Champion barrow.

Overall, the Swine Unit was very happy with the progress that was

made this year in the quality of our livestock. We hope to continue our success in the future. Our next event is the OSU Hog and Lamb Sale in April. Both crossbred and purebred pigs will be available for 4-H and FFA projects. For more information, contact Matt Kennedy at (541) 737-1906 or Keely Oswald at (541) 207-8051.

## News and Notes

**Dr. Jim Oldfield** had a visit over lunch with **Ron Scott** in August. Ron is a 1975 graduate of the Department and worked in it in various positions, most recently with **Tom Savage** in turkey research. Ron continues to live in Medford, OR, where he crafts wooden rifles.



Here's **Mike Gamroth** doing his 8 seconds on a bucking elephant near Chiang Mai, northern Thailand, last month!

**Dr. George Arscott** has kindly donated six issues (2008 and 2009) of World's Poultry Science Journal to our library.

Last month's newsletter notified readers of a KMTR TV interview with **Aurora Villarroel** and **Ben Krahn** regarding new technology at our Dairy. This interview can be found at [http://entriq0lax2wm.fplive.net/entriq0lax2/kmtr/172900200908131828\\_000059p7000344p1.wmv](http://entriq0lax2wm.fplive.net/entriq0lax2/kmtr/172900200908131828_000059p7000344p1.wmv)

## We Remember...

**Raymond Emanuel Novotny** died at his home in Ontario on September 5, at age 88. Dedicated to improving the quality of life in rural America, Ray worked 31 years for the Extension Service, 5 years in Wyoming, and the remaining in Oregon. In Harney County, he led programs to upgrade livestock production, including increasing forage production and livestock performance testing. Ray was responsible for one of the nation's most extensive sagebrush

eradication and rangeland management programs. He helped form an electrical cooperative, working tirelessly to obtain electricity and then phones to 300 homes in rural areas. The electricity was instrumental in development of a large irrigation project in Harney and northern Humboldt County in Nevada. Ray was also integrally involved in 4-H and youth programs. Harney County Chamber named him "Citizen of the Year" in 1955, "Man of the Year," and "Father of the Year" in 1957.

A Marine Corps veteran, Ray completed his undergraduate degree in Agronomy and Animal Production at the University of Wyoming. In 1970, he completed his master's in Range Improvement at Oregon State, and in '72 he took the County Agent's position in Malheur County, where he created Grass and Top Op tours of ranch and farm operations, and helped revitalize the Dairy Herd Improvement Association. The National Association of County Agricultural Agents recognized Ray for public relations in 1977 and distinguished service in 1978. His name was added to OSU's Diamond Pioneer Registry in 1995.

## October Birthdays



Ben Krahn .....	1
Howard Meyer.....	2
Tom Nichols.....	4
Dodi Reesman .....	10
Lloyd Swanson.....	16
Peter Cheeke.....	19
Hokie Adams.....	30

## Diamond Pioneers To Be Honored

The College's Diamond Pioneer Luncheon will be held October 28<sup>th</sup> at the CH2M Hill Alumni Center. The Diamond Pioneer Registry honors individuals 75 years of age or older who have contributed significantly during their careers to the pursuit of agriculture, as a business and as a way of life. Among this year's inductees are six who have contributed particularly to Animal Sciences. Citations for these honorees follow:

### **Martha Archibald Bronson**

Martha Bronson grew up on a Jersey farm in Shedd, Oregon. After attending Oregon State, she and her husband Verne, an OSU Forestry graduate and Army veteran, set up one of the first tree farms in Oregon on 500 acres of timber, formerly part of Camp Adair. In 1946 the Bronsons moved to Eugene where they raised milking Shorthorn cattle and Verne started a tree farm management business. Later the couple purchased a 320 acre ranch near Junction City where they expanded their cattle herd. Martha and Verne had 13 children, many of whom participated in 4-H. Over the years, with the help of their children, they showed cattle at the Lane County Fair and Oregon State Fairs. After Verne passed away in 1970, Martha returned to OSU and completed her degree in Home Economics. She became a member of Oregon Women for Agriculture, Cowbells, Women in Timber, and the Small Woodlands Association. She was instrumental in working to get the marital estate tax credit.

### **Larry Kaseberg**

Larry Kaseberg was raised on a wheat farm in Sherman County. His career has been raising wheat

and barley and registered and commercial Angus cattle. In recent years, he has operated the Wheatacres Irrigation Co., selling and servicing a wide variety of irrigation supplies and equipment.

Larry has a long history of involvement in university projects and agricultural organizations. The Kaseberg farm was a favorite stop for annual undergraduate field trips. Literally dozens of research trials have been conducted on Larry's fields in cooperation with university researchers. Larry served as president of the Board of Directors of the Agricultural Research Foundation for 15 years and still serves on the Board. He was president of the Oregon Wheat Growers League, vice-president of the Oregon Agribusiness Council, and member of a long list of organizations, including the American Angus Association, Oregon Flying Farmers, Sherman County Cattlemen's Association, the Extension Advisory Council, the National Association of Wheat Growers, and the Oregon State University Alumni Board. In 2004, Larry and Sherry were elected to the OSU College of Agricultural Sciences Hall of Fame.

### **Harold Kerr**

California native Harold Kerr received a B.S. degree in Animal Science from Oregon State in 1957. After serving two years in the Army, Harold was hired by the OSU Extension Service as a 4-H agent in Crook County. After completing an MS degree at Colorado State in Extension Education, he was assigned to Morrow County, where he served as staff chairman and crops agent for 13 years. Harold held a similar position in Wasco County.

He then applied for and became associate director of the OSU Extension Service, a position he held until retirement. Harold and his wife, Carol, live in Corvallis, where he continues to serve as co-leader of a 4-H livestock club. He has spent part of 10 years working at Stahlbush Island Farms. He has traveled to Jordan and Lithuania, where he served as a VOCA volunteer, helping to set up a new Farm Advisory Service.

### **Buck Coe**

After serving two years in the Combat Engineers Unit of the Army during the Korean War, California native Buck Coe moved to Oregon. He worked first on a small hay property, then found a job on a remote area of the Deschutes River called Kaskela Ranch, where he managed a 200 head cattle and hay operation. In 1965, Buck was asked to manage the 52,000-acre Hay Creek Ranch east of Madras, which included 6,500 acres of grain and hay cropland. Later, he had an opportunity to lease the farming operation at Kaskela Ranch. During the next 36 years, Buck put Kaskela Ranch "on the map" with several large-scale projects that enhanced his ability to raise premium Beau Donald Hereford cattle, alfalfa hay and grain.

Buck's wife, who served as president of the Wasco County Cattle Women's association, and their three daughters were extensively involved in 4-H. In 1982, Buck established the Babe Coe Memorial College Scholarship for mid-Columbia basin graduating 4-H seniors, and his support continues today with an endowed scholarship through the Oregon 4-H Foundation.

Some of Buck's accomplishments include the establishment of an irrigation project in 1971 allowing an additional 285 acres of malting barley and alfalfa to be raised by pumping irrigation water from the Deschutes River to an elevation of over 400 feet. In 1980 and '81 he cleared 4,000 acres of Juniper trees with two D-8 Caterpillar cats using a ship's anchor chain. This was the largest private land clearing operation on record. Crested wheat grass was reestablished on this acreage. This enabled him to increase his herd size from 200 to 500 mother cows and at the same time he switched to a successful fall calving program.

For many years Buck was a member of the Wasco County Bull Grading Tour Committee sponsored by the Wasco County Cattlemen. His efforts and support were responsible for a significant improvement of cattle quality on not only his ranch but on many other ranches in the Columbia basin over a period of forty years.

Buck served as president of the Wasco County Cattlemen's Association in 1981 and vice-president of the Oregon Cattlemen's Association in 1982; for the latter he was honored by the Association with the Distinguished Service Award for his contribution to the beef cattle industry and cattle quality. In 1984 Buck and his family were honored as Wasco County Livestock Family of the Year by Cargill, Inc.

Buck purchased an interest in a salmon ranch on the southern Oregon Coast in 1983. He was active with both cattle and salmon ranching until 1989, when he sold his interest in the salmon ranch operation.

### **Tommy and Cindy Badley**

Tommy and Cindy Badley were pioneers in the establishment of the Limousin breed of cattle in the state of Oregon. One of the founders of the Oregon Limousin Breeders Association, they contributed to the many events held by this organization during its infancy and as the organization and numbers of this breed of cattle grew in popularity. Tommy and Cindy owned the Wobble T Limousin Ranch in Grand Ronde, Oregon, for many years, producing high quality bulls and heifers for Northwest producers. For a number of years, they wrote and published the Oregon Limousin Breeders Journal from their ranch.

In 1986, the Badleys, along with Charlie Daughtery, held the first of their very successful Bonanza Limousin Events. They determined that their sale would not require haltered or "show quality" cattle but would feature good, sound, useful Limousin and would fill a niche left by the discontinuation of the Hermiston sale.

During their active years as Limousin breeders, Tommy and Cindy contributed time and animals to many worthwhile events. They donated heifers to be sold for fundraisers at sales and also made donations of animals to junior Limousin members. The couple was famous for providing beef bar-b-ques at sales and shows. Tommy and Cindy established the first Limousin display of cattle at the Oregon State Fair.

Without the insight, dedication and effort of Limousin breeders like the Badleys, the breed would not have made the impact on the beef industry in Oregon that it has. In appreciation of all of their efforts towards the breed and the

organization, Tommy and Cindy were awarded the Distinguished Service Award by the Oregon Limousin Breeders.

Tommy and Cindy have also been great supporters of OSU and the Extension Service. Tommy served for 25 years as a member of the Mid and North Willamette Valley Extension Beef Advisory Committee and was instrumental in helping to establish the Mid-Willamette Beef Field Day which ran from 1986 to 2000. Each event attracted nearly 300 beef producers from the region. New beef production technology, marketing and the production of quality beef cattle were the focus of these field days held in Rickreall. Tommy and Cindy provided the bar-b-que beef and trimmings to feed all of the field day participants, in addition to playing a major role in getting speakers and monetary supporters for the event. As part of the Beef Advisory Committee, Tommy assisted in the development of many other beef related workshops for area producers.

The Wobble T ranch was the site of many Extension field days and on-site workshops, and until their retirement in 2000, the Badleys were gracious hosts for any group. Research plots for new varieties of grasses and clovers were established in some of their pastures which provided valuable information to OSU Extension and other livestock producers.